



Enrich the **Manuscript**

A WHITE PAPER BY



The power of content is unlocked only when it is shared with the world

In today's context, content has become multifaceted. It is no longer just about the manuscript. Supporting data such as appendices, supplementary materials, datasets etc., has become as crucial as the primary content.

There is also a wealth of information in the form of metadata that enhances and adds value to the raw manuscript. Cross linking pieces of content to public databases and interlinking between the various content pieces also adds another dimension to the content workflow.

With its AI and ML based content enriching and editing capabilities, kriyadocs brings content to life by:

- ensuring consistency
- verifying validity
- improving discoverability
- enhancing presentation

Enriched content

We believe that content can be made so much more powerful by enriching and enhancing it. kriyadocs' AI driven tools make it easy to increase quality and add value to your documents.



The need for kriyadocs



Our vision is to make publishing all content as simple as **clicking a button**.

At Exeter Premedia, we've partnered with prestigious publishing houses across the world for **over 15 years** and delivered world class, publication-ready digital & print content by applying cutting-edge technology, streamlined processes and **extensive domain expertise**.

The publishing lifecycle is riddled with a lot of intricate touchpoints that often end up frustrating authors and publishers because a lot of their precious time and effort gets spent on a convoluted cycle of chores – formatting issues, version changes, status tracking, email volleys, approval delays, repeated follow-ups, and more.

We felt there had to be a better way to make publishing simple and easier. It is with that goal that we huddled our best minds and created **kriyadocs** – an online collaboration platform that brings all the stakeholders together to get work done.

With its **XML-first workflow**, on the fly proofing-and-editing capabilities, configurable workflows and integrated content management system (CMS), kriyadocs serves as the **single-source window** for our clients to **transform content** in any input format to multiple output formats including web and print PDFs, ePub and enhanced ePub with multimedia capabilities.

We endeavor to continuously enhance the capabilities of kriyadocs to meet ever-evolving client needs and challenges, while keeping up with advancements in technology, and nimbly adopting industry standards and best practices.



Transformation from manuscript to publication

The kriyadocs way

1



Conversion and styling

2



Automated editing

3



Data validation

4



Intelligent queries

5



Metadata addition

6



Language refinement

7



Real-time proofing

8



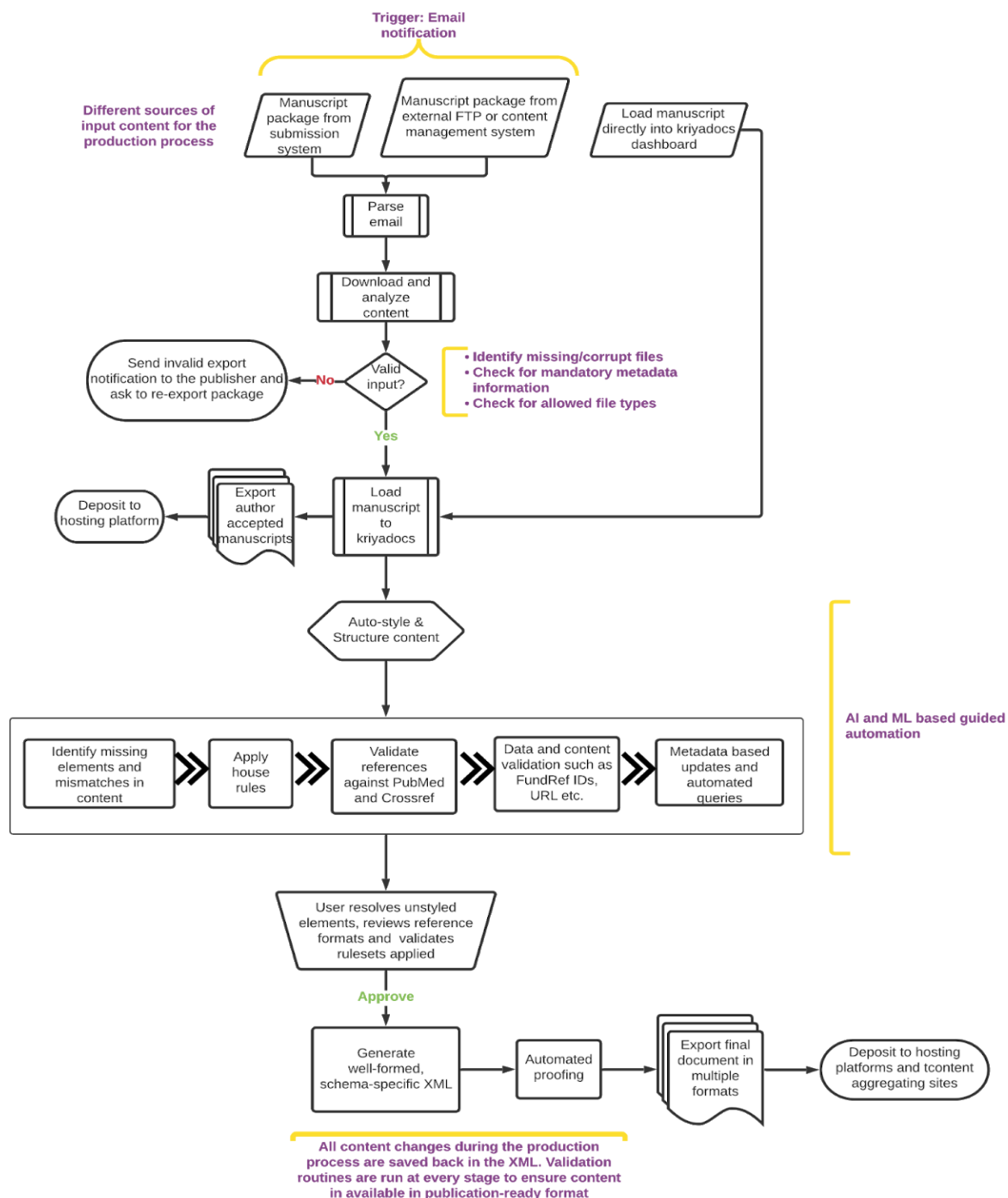
XML validation

9



Accessibility improvement

Transformation from manuscript to publication





Step 1

Conversion and styling

XML first from the get-go

Tag content sections and objects

Authors

Search style

Article title Article type

Running head Authors

Affiliation Correspondence

Abstract head Abstract title

Abstract para Keyword head

Keyword para Heading 1

Heading 2 Heading 3

Dual Mobility Implants in Hip Arthroplasty

Dante Queen, MD, PhD,^{1,2} Vishal H. B., MD¹

¹Colorado Joint Replacement, Denver, CO

²Department of Orthopaedic Surgery, University of North Carolina, Chapel Hill, NC

* Corresponding author dante.q@unc.edu

Keywords: Mobility, Hip implant, Arthroplasty, Joint replacement

ABSTRACT

Aims

Dual mobility implants in total hip arthroplasty are designed to increase the functional head size thus decreasing the potential for dislocation. Modular dual mobility (MDM) implants incorporate a metal liner (e.g., cobalt-chromium alloy) in a metal shell (e.g., titanium alloy), raising concern for mechanically assisted crevice corrosion at the modular liner-shell connection. We sought to examine fretting and corrosion on MDM liners, to analyze the corrosion products, and to examine histologically the periprosthetic tissues.

Methods

Sixty retrieved liners were subjectively scored for fretting and corrosion. The corrosion products from the three most

AI/ML-based reference styling and formatting

REFERENCES

1. Fischer S, Beattie T. The limping child: epidemiology, assessment and outcome. *J Bone Joint Surg Br* 1999;81:1029-34. PMID:<https://www.ncbi.nlm.nih.gov/pubmed/10615981>. doi:10.1302/0301-620X.81B6.9607.
2. Jain N, Sah M, Chakraverty J. Radiological approach to a child with hip pain. *Clin Radiol* 2013;68:1167-78. doi:10.1016/j.crad.2013.06.016.
3. Herman M, Martinek M. The limping child. *Pediatr Rev* 2015;36:184. doi:10.1542/pir.36-5-184.
4. Altemeier W. Pediatric orthopedic infections: missed diagnoses. *Pediatr Ann* 1999;28:718-20. PMID:<https://www.ncbi.nlm.nih.gov/pubmed/10615672>. doi:10.3928/0090-4481-19991201-03.
5. Tse S, Laxer R. Approach to acute limb pain in childhood. *Pediatr Rev* 2006;27:170. doi:10.1542/pir.27-5-170.
6. Beach R. Minimally invasive approach to management of irritable hip in children. *Lancet* 2000;355:1202-3. PMID:<https://www.ncbi.nlm.nih.gov/pubmed/10770298>. doi:10.1016/S0140-6736(00)02082-1.
7. McCanny P, McCoy S, Grant T. Implementation of an evidence based guideline reduces blood tests and length of stay for the limping child in a paediatric emergency department. *Emerg Med J* 2013;30:19-23. PMID:<https://www.ncbi.nlm.nih.gov/pubmed/22389351>. doi:10.1136/emermed-2011-200604.
8. Whiting P, Rutjes A, Westwood M. QUADAS-2: a revised tool for the quality assessment of diagnostic accuracy studies. *Ann Intern Med* 2011;155:529-36. PMID:<https://www.ncbi.nlm.nih.gov/pubmed/22007046>. doi:10.7326/0003-4819-155-8-201110180-00009.



Step 2

Automated editing

Stay true to your style

Style changes are tracked and highlighted for easy review

Clinical Risk Prediction Tools

Our review identified two multivariate clinical risk prediction tools for septic arthritis ~~amongst~~ among children presenting with non-traumatic limp that have had their validity assessed in populations separate to their derivation sample.

The four components of Kocher *et al.*'s prediction tool are non-weight bearing status, fever, raised WBC count ($\geq 12 \times 10^9/L$) and raised ESR ($\geq 40 \text{ mm/hr}$) (Table 3). Caird *et al.* derived an alternative prediction tool that included a fifth parameter, CRP $\geq 20 \text{ mg/L}$, in addition to Kocher's original four-predictor model (Table 3).

Notably, the performances of both clinical risk prediction tools are significantly worse in external validation studies (Table 3). In Kocher *et al.*'s original derivation study, the predicted probability of a child presenting with non-traumatic limp having septic arthritis was 99.6% when all four components were present. However, when this clinical risk prediction tool was applied in two external validation studies, the predicted probability of septic arthritis ranged from 58.1% to 93%. The area under the receiver-operator curve, was also notably lower in both studies compared to Kocher *et al.*'s original derivation study (0.80¹⁵ and 0.86¹⁴ respectively compared to 0.96).

A similar observation was seen when the external validity of Caird *et al.*'s prediction tool was assessed in Sultan *et al.*'s follow-up study, with a comparable reduction noted in the predicted probability of a child having septic arthritis when all five predictors were present in a new population group (60% compared to 98%).

Link objects to their corresponding citations in the text

Step 3

Data validation

Maintain data integrity

References are validated against PubMed and Crossref

Automated reference formatting per prescribed guidelines

Here are the validation results we got from PubMed and/or CrossRef and styled according to the Publisher's style guide.

Original Reference:

4. Morris JM, Roberts CL, Bowen JR, et al. Immediate delivery compared with expectant management after preterm pre-labour rupture of the membranes close to term (PPROMT trial): a randomised controlled trial. *Lancet* 2015;**387**:444-490. <https://www.ncbi.nlm.nih.gov/pubmed/26564381>. 10.1016/S0140-6736(15)00724-2.

Final Reference:

4. Morris JM, Roberts CL, Bowen JR, et al. Immediate delivery compared with expectant management after preterm pre-labour rupture of the membranes close to term (PPROMT trial): a randomised controlled trial. *Lancet* 2016;**387**:444-52. <https://www.ncbi.nlm.nih.gov/pubmed/26564381>. 10.1016/S0140-6736(15)00724-2.

Review Changes below

Original reference Data	Final reference Data	Source	Accept	
Immediate delivery compared with expectant management after preterm pre-labour rupture of the membranes close to term (PPROMT trial): a randomised controlled trial	Immediate delivery compared with expectant management after preterm pre-labour rupture of the membranes close to term (PPROMT trial): A randomised controlled trial	Casing	<input checked="" type="checkbox"/>	<input checked="" type="checkbox"/>
2015	2016	PubMed	<input checked="" type="checkbox"/>	<input checked="" type="checkbox"/>
90	52	PubMed	<input checked="" type="checkbox"/>	<input checked="" type="checkbox"/>

Edit Reference

Ask Author

Accept Changes

All changes are presented for review

Raise query to get author confirmation



FUNDER REGISTRY VALIDATION

Connect research funding to their outcomes by linking funding information to publications



Step 4

Intelligent queries

Clarity through context

Context-based queries for author confirmation/approval

AQ Armstrong A. Foucault and the question of autonomy. Paper presented at the Australian Society for and, St Lucia, 20 November 2003. <https://espace.library.uq>.

AQ Kriya (PREEDITOR) Apr 21 2021 11:34 AM
Please provide an in-text citation for reference Armstrong, 2003.

[Cite Now](#) [Delete reference](#)

selth LA. 2016. A novel class of Hsp90 C-terminal modulators induction of a heat shock response. *Prostate* **76**:1546-1559.

Asangani JA, Dommeti VL, Wang X, Malik R, Cieslik M, Yang R. 2014. Therapeutic targeting of BET bromodomain proteins in castration-resistant prostate cancer. *Nature* **510**:278-282.

Bairati J, Meyer F, Fradet Y, Moore L. 1998. Dietary fat and advanced prostate cancer. *The British journal of urology* **150**:1271-1275. PMID:<https://pubmed.ncbi.nlm.nih.gov/pubmed/9507851>.

Queries for missing elements and unlinked objects/citations

AQ Kriya (PREEDITOR) Mar 15 2021 2:56 PM
Please note that Table 1 is cited in the text but does not appear in the content. Please provide the complete details for this Table 1 or delete the citation.

[Link existing](#) [Add new](#) [Not a link](#)

AQ Kriya (PREEDITOR) Apr 21 2021 11:34 AM
Please provide an in-text citation for reference Armstrong, 2003.

[Cite Now](#) [Delete reference](#)

AQ Kriya (PREEDITOR) May 9 2021 5:45 PM
Please provide an in-text citation for reference Castells M, 2005.

[Cite Now](#) [Delete reference](#)

Step 5

Metadata addition

Supercharge your content

Metadata

supplement

Additional supplemental material is published online only. To view, please visit the journal online (<http://dx.doi.org/10.1136/kriyadocs.2021.0001>).

Handling editor

John Greene

Acknowledgements

The authors wish to acknowledge the work of the Ministry of Health staff involved in this study for data collection and processing.

Contributors

TA led the development of the methods, application of the methods, drafted earlier versions of the manuscript and contributed to the final version of the manuscript. SF provided technical input to the development of the methods, drafted and edited earlier versions of the manuscript, and contributed to the final version of the manuscript.

Funding

This study was funded under an award from ABC Philanthropies to the University of Melbourne to support the Data for Health Initiative.

Disclaimer

The funders had no role in study design, data collection and analysis, decision to publish or preparation of the manuscript.

Patient consent for publication

Not required.

Ethics approval

Ethics approval was not required because data collection formed part of ongoing routine work by federal government staff. We did not involve patients or the public in the design, conduct, or reporting of the research.

Data availability statement

All data relevant to the study are included in the article or uploaded as supplemental information.



WYSIWYG
rich text editor

Updated metadata
gets saved in XML in
the correct format



Submission
metadata

Read from
submission systems
and update
standardized
statements



Subject areas
and topic codes

Map category-
specific codes to
facilitate
discoverability of
digital content



Step 6

Language refinement

Clear and concise

Catch spelling errors and American/British variants

Sexual abuse disclosure play a role in exacerbating adverse mental health outcomes. We applied an in-depth qualitative timeline method to plot the chronological relationship of key traumatic events, interpersonal reactions to disclosure and the mental health of the girl or young woman over her lifespan. Participants were women attending a hospital-based sexual assault counselling service in Sydney, Australia.⁸

Write or paste your text here **too** have it checked continuously. Errors will be underlined in different colours: we will mark **seplling** errors with red underlines. Furthermore grammar **error's** are highlighted in yellow. LanguageTool also marks style issues in a **reliable manner** by underlining them in blue. **did** you know that you can **sea** synonyms by **d**. **Reject** ing a word? **Its** a impressively versatile tool, e.g. if **youd** like to tell a colleague from **over sea's** about what happened at 5 **PM** in the afternoon on **Monday, 27 May 2007**.

There is ample evidence that sexual abuse is widespread globally report exposure to sexual abuse in childhood exposure to sexual abuse and the occurrence of a wide range of victims, particularly related to depression, post-traumatic stress disorder (PTSD) and other mental health problems.³⁻¹⁰ Whereas many women are resilient and able to cope with the risk of such adverse outcomes following abuse, public mental health programs aiming to improve the mental health of girls and young women who disclose sexual abuse are scarce and support in a manner that increases their security and safety.

Catch grammatical and style errors

Furthermore • Punctuation error

error's • Extraneous apostrophe

in a reliable manner • Style

did • Grammar and others

sea • Possible word confusion

double clicking • Grammar and others

Its • Possible typo

Short, meaningful explanations for errors

Step 7

Real-time proofing

Pitch perfect pages

Clinical science

Table 1 Distribution of Lens Opacities Classification III (LOCS III) nuclear and posterior subcapsular (PSC) nuclear grades and densities (n=120)

Grading	NO	NC
1.0-1.9	26	7
2.0-2.9	5	7
3.0-3.9	19	7
4.0-4.9	10	7
5.0-5.9	3	7
6.0-6.9	3	7

Please use Adjust Table option to fix column width

region selection method has an advantage in portraying the morphological characteristics of the whole nucleus. Moreover, it theoretically diminishes the subjectivity of observer-defined action owing to the identifiable contour of lens nucleus.

There were strong correlations of SS-OCT Nuclear Density with LOCS III NO ($r=0.831$, $P<0.001$) and NC ($r=0.873$, $P<0.001$). Lower correlations of nuclear density indices based on other OCT images with LOCS III nuclear grading scores were reported.^{18,19} Makhorkina *et al*¹⁹ quantitated the nuclear density using AS-SS-OCT images, which showed an area of highest consistency located in the superior half of nucleus, where they decided to define a rectangular ROI. And the AS-SS-OCT image-based nuclear density showed lower correlations with NO

Catch issues in table column alignment and base alignment

Correspondence to: Dr. J. Li, Department of Ophthalmology, The University of Hong Kong, 700, Queen's Road, Hong Kong, China. Email: jli@hku.hk

Received 1 June 2018
Revised 22 August 2018
Accepted 26 August 2018

INTRODUCTION
Appropriately evaluating lens nuclear opacity is vital for the documentation of the process of

NUMBER OF LINES IN HEAD PARA ON WHICH REFLECTS SHORT COLUMN
Summary section head: Clinically, light scattering caused by the lens can be used to assess the extent of its opacity. According to the direction of scattering, the method is generally divided into two categories: the forward scattering analysis and the backward scattering analysis.¹ The former category includes the computerized quantitative psychophysical method that requires the cooperation of participants in a subjective manner,² and the double-pass system that provides the objective measurement.^{3,4} They derive the intensity of straylight by analyzing the retinal image quality. Previous studies have investigated their efficacy in evaluating lens opacities,⁵⁻¹⁰ and in acting as the decision-making tool for surgery.

On the other hand, the backscattering was typically analysed using anterior segment imaging tools, such as Scheimpflug tomography systems, such as Scheimpflug principle and optical coherence tomography (OCT), which is currently thought of as the golden standard. In this process, the features of lens opacities should be recorded by an observer with dislump photography first, and compared with those described in the standard reference pictures later to estimate the type and severity of cataracts. However, the examiner's proficiency in performing this grading system, in addition to the dislump settings, may have an influence on its reproducibility.^{11,12}

Alternatively, the anterior segment image analysis based on tomography systems, such as Scheimpflug principle and optical coherence tomography (OCT), can also be used to estimate the magnitude of backscatter

Catch errors in adding correct font for entities

Built-in validation

Cross check proof quality

Rule based templates

Automatic sizing and placement



Step 8

XML validation

Test your tags

Check conformity with PMC guidelines

Validate against customer specific rules

Probe Validation for kriyadocs.2021.0001

DTD-Validator PMC-Validator Probe-Validator

Count : 20

Rule ID: r007 Always has XXX prefix (10.7554/XXX.) followed by same 5 digit number as publisher id.
Signoff allow: false TEXT: 10.7554/54927
/article/front/article-meta/article-id[2]

Rule ID: r057 Article type "research-article" mismatch with subject.
Signoff allow: false TEXT: research-article
/article/@article-type

Rule ID: r060 Article @subj-group-type="heading" name mismatch.
Signoff allow: false TEXT: field
/article/front/article-meta/article-categories/subj-group[2]/subject

Identify XML syntax errors

Step 9

Accessibility improvement

Expand your reach

Add alt text and long descriptions (ATLD) in the editor interface

Export ATLD with various online outputs

Validate and update accessibility-related metadata

Key benefits

Measurable and meaningful outcomes



INCREASED CONSISTENCY

Consistent and accurate
outputs on every export

REDUCED PRODUCTION TIME

Automation and stringent
validation across
different stages

ENRICHED METADATA

Improve attribution,
discoverability and
searchability

IMPROVED ACCESSIBILITY

Disseminate content
to a wider audience



Unchain yourself from the desk. Get work done on-the-go with a full featured toolset at your fingertips.

ENABLE

Effortless collaboration.
Empowered teams.



Intuitive user
interface



Kanban
lanes



Centralized
communication



Actionable
dashboards

ENHANCE

Adaptable workflows.
Rich content.



AI driven
templates



XML-first
workflows



Integrated
CMS & DAM



Multilingual
support

ENSURE

Smart automation.
Stringent validation.



Automated
data validation



ML driven
editing



Smart query
resolution



Role & element
level security

EXTEND

Repeatable processes.
Quick monetization.



REST API
integration



Dynamic
workflows



Customizable
business rules



Rich metadata
enablement

To know more or to schedule a demo visit
www.kriyadocs.com